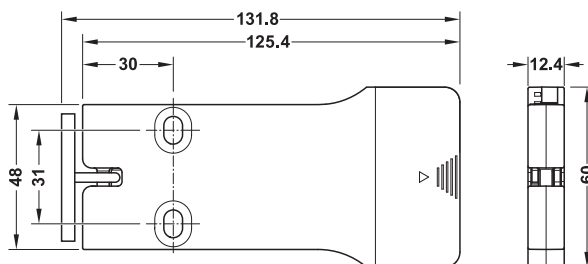
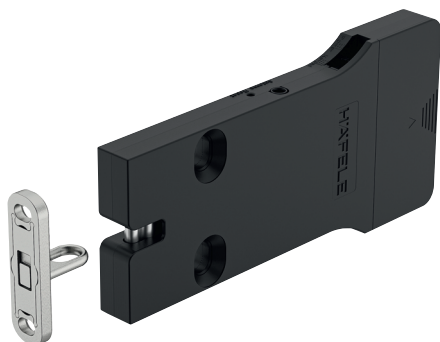


Battery-operated EFL 30 furniture lock



- > Area of application: Battery-operated, intelligent locker lock for indoor use: For wardrobes, lockers, compartment cabinets with doors made from wood, for sliding doors or drawers.
- > Material: Housing: Plastic, locking bolt and locking component: Zinc alloy
- > Colour: Black
- > For door thickness: ≤19 mm

- > Ideal for individual locking points and mobile furniture
- > Integration into Dialock software or use of the Dialock Manager app for convenient configuration and administration of locking points and locking authorisations
- > Slim and compact dimensions
- > Integrated BLE module (Bluetooth Low Energy)

Technical data	
Technology	Tag-It, Mifare Classic EV1, Mifare Desfire EV1/EV2
BLE (Bluetooth 5) integrated	For start-up and configuration with the Häfele Dialock Manager app for smartphones (available for iOS and Android)
Degree of protection	IP20
Batteries	2 x AAA battery, LR03, alkaline manganese, 1.5 V
battery service life	Up to 20,000 cycles
Number of possible keys	<1000
Operating temperature	0 °C to +55 °C
Humidity	10–95% not condensed
Read range	Card max. 38 mm; tag max. 28 mm
Minimum distance from EFL 30 to EFL 30	100 mm (vertical), 150 mm (horizontal) mounted.
Tensile load	1000 N
Dimensions (L x W x D)	126 x 61 x 13 mm
Approvals and certifications	CE (Europe), FCC (USA), IC (Canada), EN 61000-4-2 – level 3

Functionality:

Standard mode

User keys are allocated to one or several (optional) locks for locking and unlocking.

The lock remains open for 3 seconds after opening, and locks again automatically.

The door status (locked/open) can be identified with the feedback contact and additional macro with which an alarm can be triggered.

The open time can be adjusted to 1–30 seconds in the basic operation mode using the programming transponder.

Free choice of locker

Every user key can lock an open locker. When doing this, the user key is assigned to the selected locker, meaning that only this user key can unlock the locker again. When the locker is unlocked again, the assignment is deleted. The cabinet number is not stored on the user key.

Toggle mode (deadbolt lock function)

When an authorised transponder is held in front of the device, the lock unlocks and remains unlocked. When the user key is presented again, the lock is locked again.

Note

The EFL 30 / EFL 30C can be configured and operated in the stand-alone mode via the Dialock Manager app or as locking point in the Dialock Software using the programming card and clearing key card.

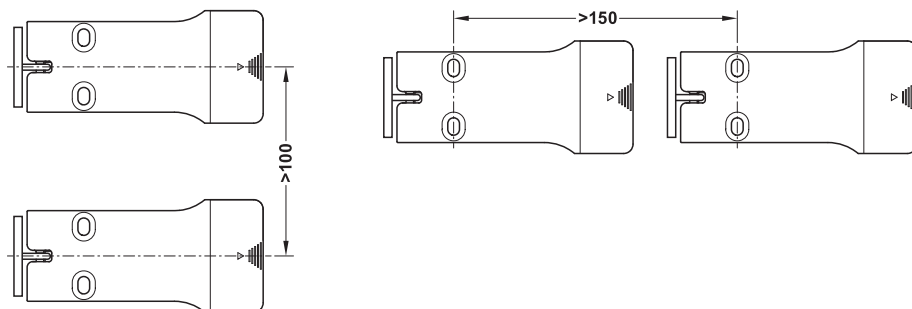
Notes concerning operation:

Please contact your responsible Häfele employee when using the Dialock software.

Note

In order to avoid interference between locks, a minimum distance of 100 or 150 mm must be maintained between installed locks. If the distance is less than this minimum, continuous communication will take place between the locks, which will drain the battery. In order to avoid unnecessary battery draining, do not insert the battery until start-up takes place.

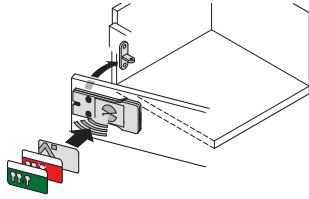
For applications that require a smaller distance, the FT 200 can be used in combination with the EFL 3 instead.



DK 2015, HDE, 07/15; Dimensional data not binding. We reserve the right to alter specifications without notice.

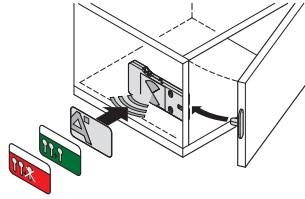
Installation

Installation of hinged door



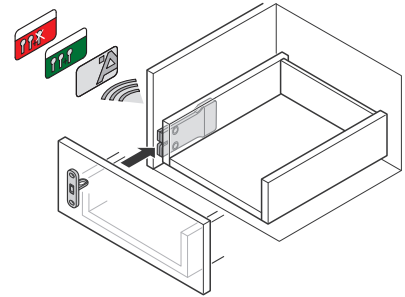
In order to unlock the EFL 30, the transponder card must be held against the hinged door

Installation on cabinet

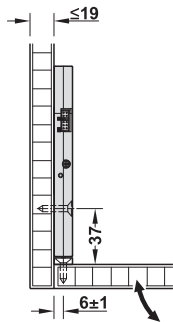


In order to open the EFL 30, the transponder card must be held against the side of the cabinet

Installation on drawer



In order to open the EFL 30, the transponder card must be held against the side of the cabinet



	Cat. No.
EFL 30 furniture lock	237.59.070
EFL 30C Furniture lock with additional feedback contact	237.59.071

Order reference

Available from the first quarter of 2021

Please order batteries (Cat. No. 910.54.986) separately.

Please order programming and clearing key card, Dialock Manager app licence or software separately.